

# BLANTON MUSEUM OF ART



Director of Education and Academic Affairs

# Blanton Museum of Art

---

Over the last decade, initiatives like the opening of *Austin* by Ellsworth Kelly, our groundbreaking exhibitions and education programs, and most recently, the redesign of our grounds by the internationally acclaimed firm Snøhetta, have played a key role in establishing the Blanton Museum of Art as one of the most highly attended, highly regarded university art museums in the country. As the primary art museum for both The University of Texas at Austin and the greater Austin community, welcoming and engaging a wide audience is central to the Blanton’s mission.

The museum is known for its bold vision and has a proven track record as a museum that is deeply relevant, and where education is embedded into everything we do. We have put The University of Texas at Austin, and the city of Austin, at the forefront of the visual arts.

We are unique, serving not only as the art museum for a leading public research university, but also as the principal art museum for one of the fastest-growing, most dynamic cities in the country. This means the Blanton is both deeply rooted locally and has a national presence.

The Director of Education and Academic Affairs will be a part of the leadership team as we further build a truly iconic art museum and fulfill the promise of our recent growth and emergence on the national stage. There is even more to come for the Blanton and the thousands of school and university students and visitors we serve.

This position reports to Blanton Director Simone Jamille Wicha.

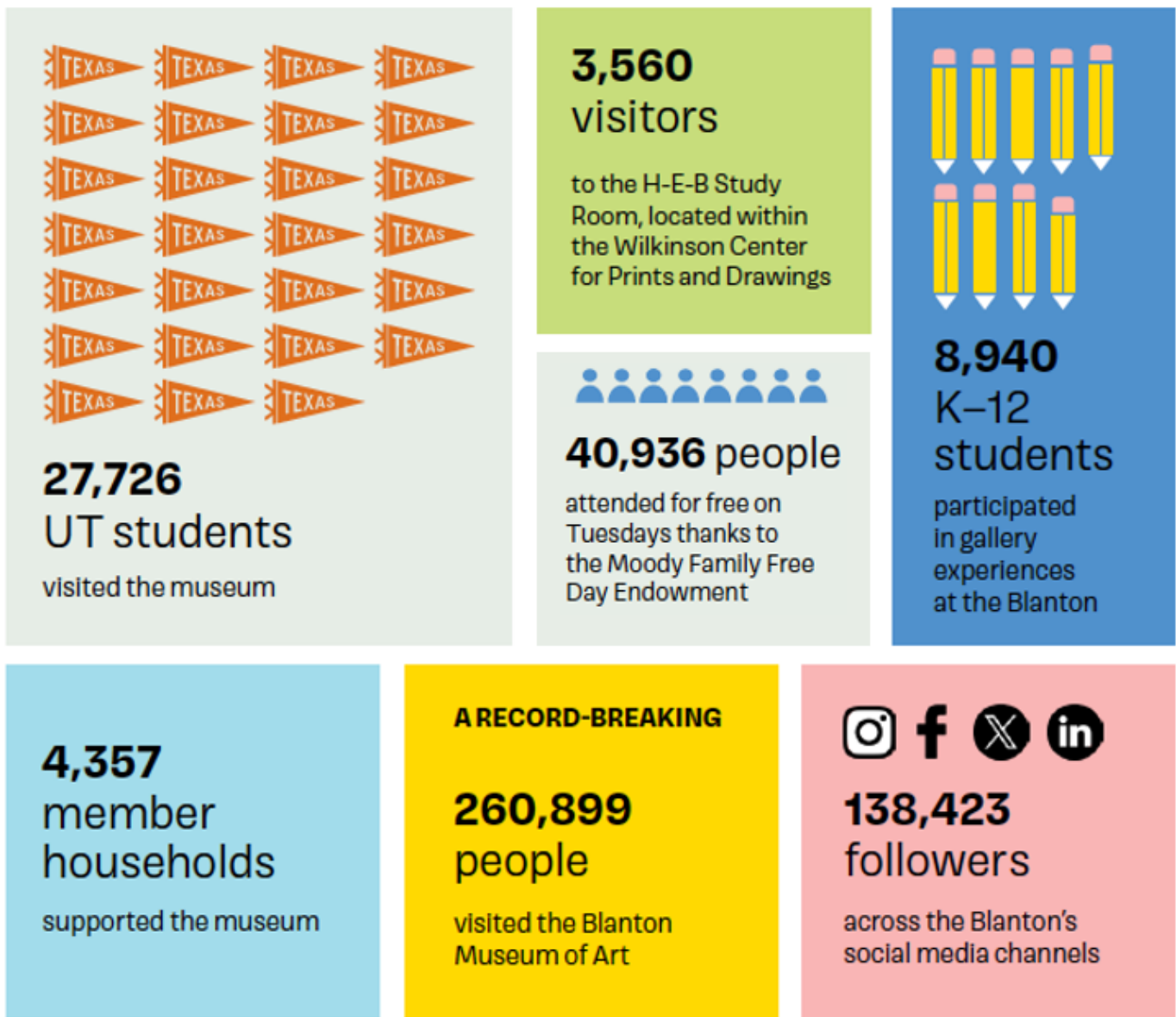


A museum that stands out on campus, in the city, and in the art world.”

— **The New York Times**

The Blanton's permanent collection features more than 22,000 works of art, with depth in modern and contemporary American and Latin American art, Italian Renaissance and Baroque paintings, and prints and drawings. We are the third most highly attended art museum in Texas, and the most highly visited university art museum in the nation. Our scale is also evident in our physical footprint—we are a three-building complex with ample outdoor space. We have 52,000 square feet of gallery space, plus the grounds. The Blanton organizes 2-4 major exhibitions each year and rotates our collection galleries regularly. We have one of the most visited print study centers in the country.

The following are some key metrics from calendar year 2024:



# OPPORTUNITY

The Blanton Museum of Art on the campus of The University of Texas at Austin is seeking an experienced and visionary leader for its nationally recognized department of education and academic affairs. The position requires a broad knowledge of art history, deep commitment to object-based teaching, an interdisciplinary mindset, and experience navigating complex organizations. They will work collaboratively with the curatorial team and others on interpretation and programming. The Director of Education and Academic Affairs will report to the Blanton's Director.

They will supervise a team of five full-time staff, two graduate student fellows, and 60 volunteer gallery teachers.

This is a great opportunity for a creative, ambitious museum educator who wants to make a difference in both the local communities and the museum field at large.



# Education at the Blanton: University Teaching

---

As the art museum for The University of Texas at Austin, the Blanton supports UT’s goal of transforming lives for the benefit of society and driving impact in the state of Texas and beyond. We welcome Longhorns at every stage of their college journey, enrich student life, directly support teaching, provide professional development, and advance research and knowledge.

In 2024, the Blanton served a total of 27,726 UT students—13,972 of these students visited with courses and 13,754 came on their own time as part of experiencing life on campus. Some class visits are taught by faculty or TAs, with preparatory support from the Blanton, while others are taught by Blanton educators. We also facilitate course visits to the museum’s H-E-B Print Study Room. The museum welcomes courses from every college and school at UT and has developed notable, multi-year partnerships with the Dell Medical School, as well as the School of Nursing. Last year, we hosted a total of 232 courses, ranging from the College of Fine Arts and the College of Natural Sciences to McCombs School of Business and the School of Civic Leadership. We also contribute to UT’s commitment to student well-being through collaborations with Healthyhorns and other student support units.

A Senior Museum Educator, University Audiences and part-time graduate student Fellow support work in this portfolio; there is also a Coordinator of Group Visits who manages tour scheduling. The department’s Administrative Assistant provides support for both university and K-12 programs. The university education team collaborates closely with the curatorial staff of the H-E-B Print Study Room.



An acknowledged leader in the college museum field thanks to its dynamic programs, commitment to research and public-facing engagement.”

— **The Washington Post**  
AUG. 2024



# Education at the Blanton: K-12 Teaching

---

The Blanton has a long history serving as an educational resource for the greater Austin community and has been a leader and innovator in the field of museum education nationally. K–12 school visitors draw inspiration from the museum’s collection and the powerful experience of stepping foot on UT's campus. The impact of the Blanton’s arts education programs extends to the career development of UT graduate students who hold fellowship positions at the Blanton, leading K–12 visits and building the hands-on skills needed for careers as museum educators and classroom teachers.

In 2024, we hosted 8,940 K–12 students for gallery visits using curricular resources and lessons developed by the Blanton. This represents a wide geography of 39 districts and 167 schools. Title I schools accounted for 44% of visits. We also served 379 teachers served through professional development opportunities.

A Museum Educator, Schools and Teacher Programs; Museum Educator for Docents, Families, & Schools; and part-time graduate student Fellow support work in this portfolio. In addition, approximately 60 Volunteer Gallery Teachers are essential to leading K–12 groups. Gallery Teachers are recruited through a competitive process and receive in-depth instruction and preparation. Our roster includes retired teachers, artists, lawyers, nurses, and other professionals, some of whom are native Spanish speakers.



# Role and Responsibilities

---

- Provide strategic leadership for the Education and Academic Affairs Department, serving university audiences, schools, and the public. Lead, mentor, and evaluate staff; oversee departmental programs and budgets. Foster a culture of excellence, innovation, and collaboration that distinguishes the Blanton as a leader in museum education. Design and implement educational programs that serve as models for peer university art museums. Partner with other senior leadership members and internal teams to align initiatives with the museum's mission and represent the museum in professional organizations and field-wide initiatives.
- Develop and sustain collaborative partnerships with a wide range of academic departments and university programs to foster the use of the Blanton collection and special exhibitions as an integral resource. Teach gallery-based class sessions for undergraduate and graduate courses from a broad range of academic disciplines—from medical and nursing programs to the humanities—with a special emphasis on integrating the use of Blanton resources with major university initiatives. Partner with other museum departments to develop and implement strategies that facilitate this effort.
- Collaborate closely with curators and other museum staff to develop and implement interpretive strategies for exhibitions and objects from the collection. Participate as needed in exhibition content reviews and selection processes. Review and edit all written interpretive materials for clarity.
- Oversee K-12 programming developed in close collaboration with area school educators, appropriate university faculty and staff, and partner organizations supporting K-12 visual arts education. Provide leadership for the museum's long-standing docent program with a corps of more than 60 volunteers. Oversee family programs, evaluating quality, impact, and potential for growth.
- Develop and implement an evaluation plan to assess the qualitative and quantitative impact of Education and Academic Affairs Department programs. Collaborate with museum staff to develop fundraising strategies and actively participate in fundraising and donor solicitation efforts in support of departmental initiatives.
- Provide direction for engaging the broader university student body in self-initiated, out-of-class museum visits that foster a lifelong love of the arts among students. Oversee departmental interns and fellows.

- Other related functions as assigned.
- This role is fully on-site and cannot be performed remotely.

## Required Qualifications

---

- Bachelor's degree with 7-10 years of professional experience in a related discipline.
- Ability to articulate and lead a strong vision for object-based learning across a wide range of disciplines
- Proven success teaching at the university level, using experiential, interactive, and collection-driven approaches
- Demonstrated experience developing and delivering educational programs for K-12 students and educators
- Strong research skills and experience connecting museum collections to interdisciplinary, curriculum-based courses from a variety of academic departments
- An interdisciplinary thinker with a genuine enthusiasm for collaboration, and a demonstrated commitment to meaningful faculty, student, and institutional engagement.
- Significant experience in people management and leadership, including mentoring, performance management, and team development
- Demonstrated ability to build and sustain effective relationships with museum staff, university partners, community stakeholders, and diverse audiences
- Knowledge of museums and non-profit operations, including best practices and emerging trends in museum education and academic partnerships
- Excellent written and verbal communications skills, with the ability to engage diverse audiences clearly and effectively
- Strong organizational skills, attention to detail, and the ability to work on multiple programs and deadlines simultaneously
- Availability to work a flexible schedule, including occasional evenings and weekends, as required by programs and events

# Preferred Qualifications

---

- Graduate degree in art history, art education, fine arts, museum studies, or a related discipline
- Professional experience in a college or university museum or academic museum environment
- Prior teaching experience in higher education, including curriculum development and faculty collaboration
- Spanish fluency

# HOW TO APPLY

A résumé, letter of interest, and three references including contact information/email addresses are required to apply. To apply online, visit the applicant website at:

[https://utaustin.wd1.myworkdayjobs.com/UTstaff/job/UT-MAIN-CAMPUS/Director-of-Education-and-Academic-Affairs\\_R\\_00045828](https://utaustin.wd1.myworkdayjobs.com/UTstaff/job/UT-MAIN-CAMPUS/Director-of-Education-and-Academic-Affairs_R_00045828)

**Contact in Confidence:** For additional information about this position, contact Amanda O’Quinn at 512-471-7761 or submit nominations or a cover letter and résumé to [amanda.oquinn@blantonmuseum.org](mailto:amanda.oquinn@blantonmuseum.org).

The University of Texas at Austin provides a competitive benefits package that includes insurance and retirement benefits in addition to a wide variety of programs and services. In this full-time position, you may participate in the University’s insurance plans and add eligible dependents to your coverage.

The Basic Coverage Package is 100% employer paid for full-time employees and consists of a PPO medical plan with prescription drug coverage, \$50,000 basic term life insurance and \$50,000 basic AD&D insurance; optional medical insurance for employees’ dependents is up to 50% employer paid for full-time employees. Additional coverage plans include dental, vision, flexible spending accounts, and more. The retirement plan for this position is the Teacher Retirement System of Texas (TRS), subject to the position being at least 20 hours per week and at least 135 days in length. More detailed information on employee benefits is available at <https://hr.utexas.edu/prospective/benefits>.

A criminal history background check will be required for finalists under consideration for this position.

*The University of Texas at Austin, as an equal opportunity/affirmative action employer, complies with all applicable federal and state laws regarding nondiscrimination and affirmative action. The university is committed to a policy of equal opportunity for all persons and does not discriminate on the basis of race, color, national origin, age, marital status, sex, sexual orientation, gender identity, gender expression, disability, religion or veteran status in employment, educational programs and activities, and admissions.*

*If hired, you will be required to complete the federal Employment Eligibility Verification form, I-9. You will be required to present acceptable, original documents to prove your identity and authorization to work in the United States. Information from the documents will be submitted to the federal E-Verify system for verification. Documents need to be presented no later than the third day of employment. Failure to do so will result in dismissal.*

*UT Austin is a tobacco-free campus.*

**More information on benefits and employment at UT is available at:  
<https://hr.utexas.edu/prospective>**

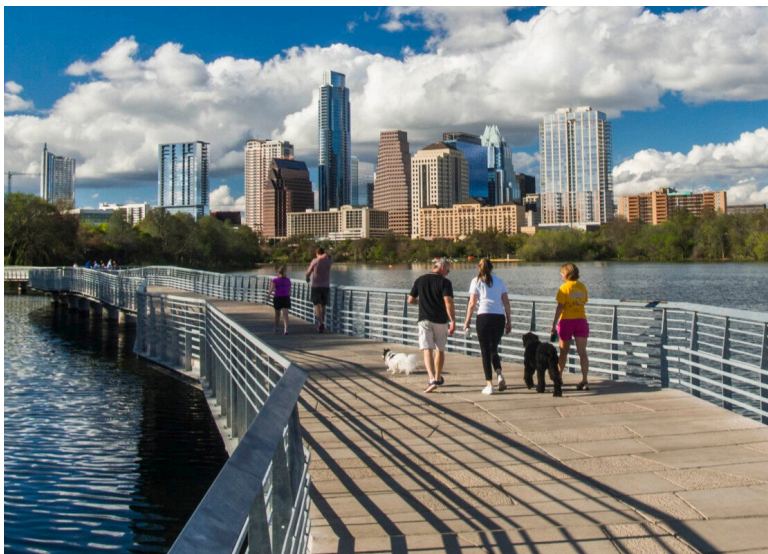
# Living and Working in Austin, Texas

---

At the center of one of America's fastest-growing cities, UT Austin provides students and faculty with the opportunity to participate, discover, and develop on an enormous scale. UT students and faculty engage with and learn from the entrepreneurs and creators who have led the city's rapid growth. Adjacent to the Texas State Capitol, the university is at the center of this exciting hub of high-tech innovation and its fast-growing, multi-faceted economy, which also supports a wide range of visual arts, music, and theater programs and venues.

Our connected community, the vitality and the values of UT, and Austin's culture provide UT students, faculty, and staff with life-changing opportunities and an incredible community in which to work, live, and grow professionally and personally. The university benefits from strong relationships with the local government and community, building on the high quality of life that flows from the natural beauty of the Texas Hill Country, the creative pulse of the city, the entrepreneurial and high-tech character of the economy, and its distinct culture of food (notably Tex-Mex and barbecue), music, art, and independent businesses.

The Live Music Capital of the World hosts major annual events like the Formula One Grand Prix, the annual South by Southwest (SXSW) festival, and the Austin City Limits music festival, among thousands of others. Frequently ranked as one of the best places to live in America, Austin's greater metropolitan area population is quickly approaching two million. A temperate climate makes outdoor recreation possible year-round through many parks, lakes and hike-and-bike trails throughout the city and region.



“...the Blanton [went] from good college art museum to global arts pilgrimage site in an instant.”

— **Forbes**

SEPT. 2024

